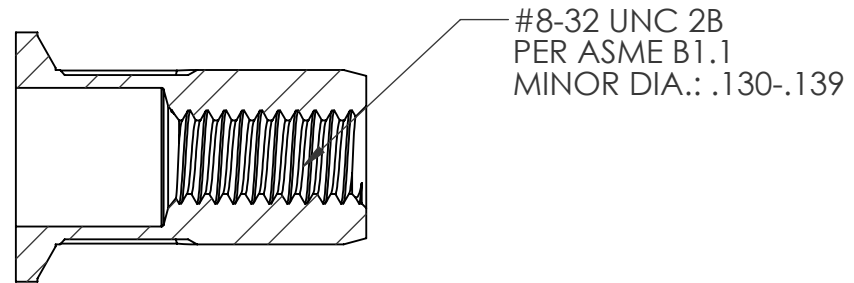
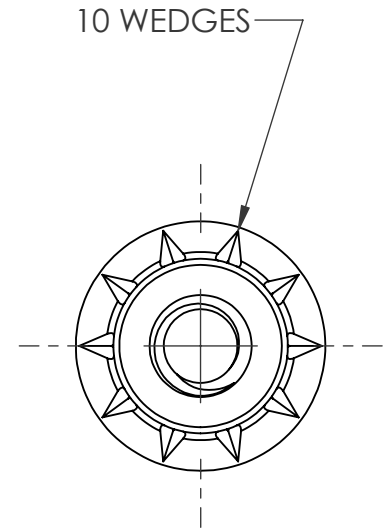
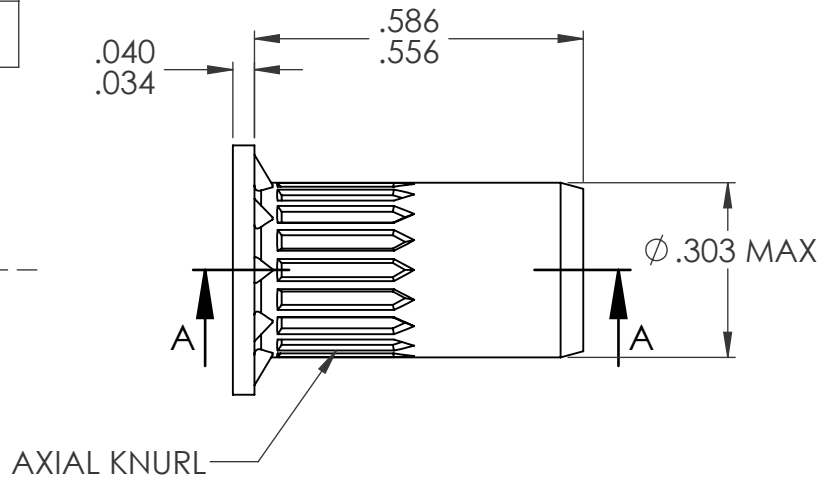
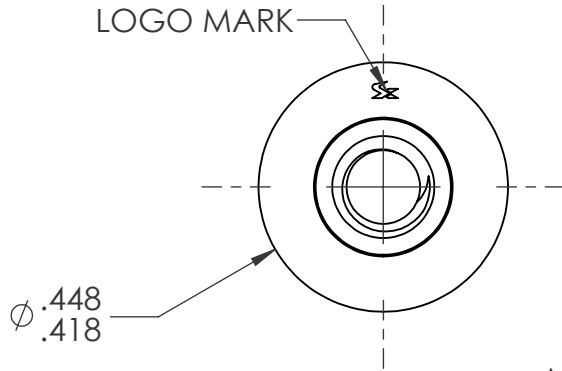



REVISIONS				
REV.	DESCRIPTION	DATE	ECN	INITIALS
A	INITIAL RELEASE	10/7/2020	3787	TDJ
B	UPDATE BODY DIAMETER	09/07/22	4105	MRA



SECTION A-A

NOTE:

- GRIP RANGE: .059-.118
- HOLE SIZE: .300 +.006/- .000 AFTER ALL APPLIED FINISHES.
- INSTALLED LENGTH: .413 MAX.
- LUBRICATION: NONE
- INSTALLATION TOOL: SPIN PULL

CUSTOMER APPROVAL:				UNLESS OTHERWISE SPECIFIED:		NAME	DATE			
DATE:				DIMENSIONS ARE IN INCHES TOLERANCES: ANGULAR: MACH ± 1 BEND ± 1 ONE PLACE DECIMAL ± 0.01 TWO PLACE DECIMAL ± 0.005		DRAWN	TDJ 2/10/2021			
				INTERPRET GEOMETRIC TOLERANCING PER: ASME Y14.5M-1994		CHECKED	CL 2/10/2021	TITLE: #8-32 OPEN END LARGE FLANGE OPTISERT		
				MATERIAL C1008/C1010		ENG APPR.	JVK 2/10/2021			
PROPRIETARY AND CONFIDENTIAL <small>THIS DRAWING, AND THE INFORMATION CONTAINED HEREIN, ARE THE PROPERTY OF SHEREX AND ARE NOT TO BE USED IN ANY MANNER DETRIMENT TO THE INTEREST OF THE COMPANY. SHEREX SOLUTIONS RESERVES THE RIGHT TO REVISE PART/DRAWING WITHOUT NOTICE. UNLESS OTHERWISE SPECIFIED, ALL SPECIFICATIONS REFERENCED ON THIS DRAWING WILL PERTAIN TO THE MOST RECENT AND ACTIVE REVISION.</small>		NEXT ASSY	USED ON	FINISH ZINC PLATE CLEAR TRIVALENT CHROMATE PER SFS-01-001;SC1		MFG APPR.		SIZE DWG. NO.	REV	
		APPLICATION		DO NOT SCALE DRAWING		Q.A.		A OPT2-0832-118	B	
						COMMENTS: E-mail: info@sherex.com www.sherex.com Phone: 866-474-3739 Fax: 716-875-0358		SCALE: 3:1	WEIGHT:	SHEET 1 OF 1